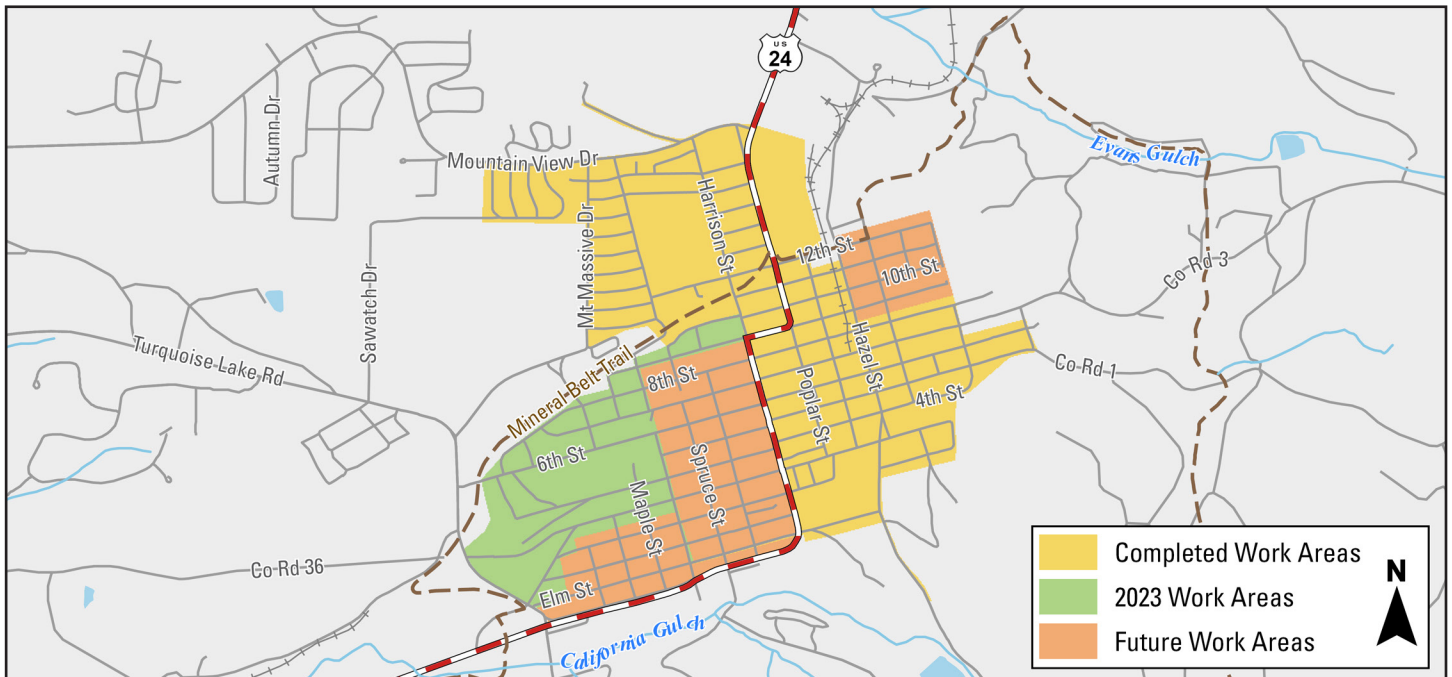


# LEADVILLE NATURAL GAS PROJECT

INFORMATION SHEET  
COLORADO



This map is a graphic and may not show exact locations.

## Overview

We continue to construct a multi-year natural gas project in unincorporated Lake County and Leadville. The Leadville Natural Gas Project includes replacing, relocating and installing new natural gas lines, replacing service lines that serve individual properties and relocating natural gas meters as needed. This work allows us to continue to provide safe, reliable natural gas service and enhances system resiliency during extreme weather.

## Schedule

Construction began in 2019 and is expected to continue through 2025. Construction in 2023 will start in May and continue through September.

Schedules are subject to change.

## Construction

During work, you may notice:

- Marking of utility lines and utility survey holes.
- Road and sidewalk closures.
- Traffic control.
- Parking restrictions.
- Temporary changes to access.
- Construction noise.

We install natural gas line by open trenching and boring.

- Open trenching involves digging a trench and placing the natural gas line in the trench.
- Boring uses a specialized machine to create an underground pathway through which the natural gas line is pulled or drilled.

We restore work areas to preconstruction conditions as weather allows. Work areas may be left temporarily restored after construction until we can complete final restoration.

**LEADVILLE NATURAL GAS PROJECT****Safety overview**

Public safety is at the foundation of all we do. The safety of the public around our natural gas system influences every decision we make. We take a proactive approach to public safety by implementing safety measures before, during and after construction.

The project has been designed to meet federal and state standards and safety requirements for installing, maintaining and operating natural gas infrastructure.

**Learn to recognize a natural gas leak**

If you ever suspect a natural gas leak, leave your home or business immediately. Once you are safely away, call **911**, then Xcel Energy at **800-895-2999**.

It is important to know how to recognize potentially dangerous natural gas leaks, so use your senses. Signs of a natural gas leak include:

- A “rotten egg” or sulfur-like odor, though it may smell differently to you.
- Hissing, whistling or roaring sounds outside near the natural gas line or inside near an appliance.
- Dirt spraying into the air or continuous bubbling in a pond or creek.
- Unexplained dead or dying vegetation.

**Call before you dig**

A common cause of natural gas incidents results from improper or unauthorized digging near underground utilities. Prior to digging, call **811** or visit [colorado811.org](https://colorado811.org) to have buried utility lines located and marked. This helps prevent dangerous conditions that result from damaging a buried line.

**Natural gas construction safety****During construction and installation of the natural gas line, we:**

- Implement a corrosion prevention system designed to eliminate metal loss.
- Verify pipe welds using an independent third party.

**Once the line has been installed and prior to putting it into service, we:**

- Internally inspect the line.
- Perform internal pressure tests to verify the line’s integrity.

**During the lifetime of the natural gas line, we:**

- Conduct annual hazard patrols and leak surveys and regularly inspect the line.
- Monitor (24/7) the line and other infrastructure through our staffed gas control center.

**Contact Us**

833-359-0105

[XcelEnergyNaturalGasProjects.com/Leadville](https://XcelEnergyNaturalGasProjects.com/Leadville)[Info@XcelEnergyLeadvilleGasProject.com](mailto:Info@XcelEnergyLeadvilleGasProject.com)