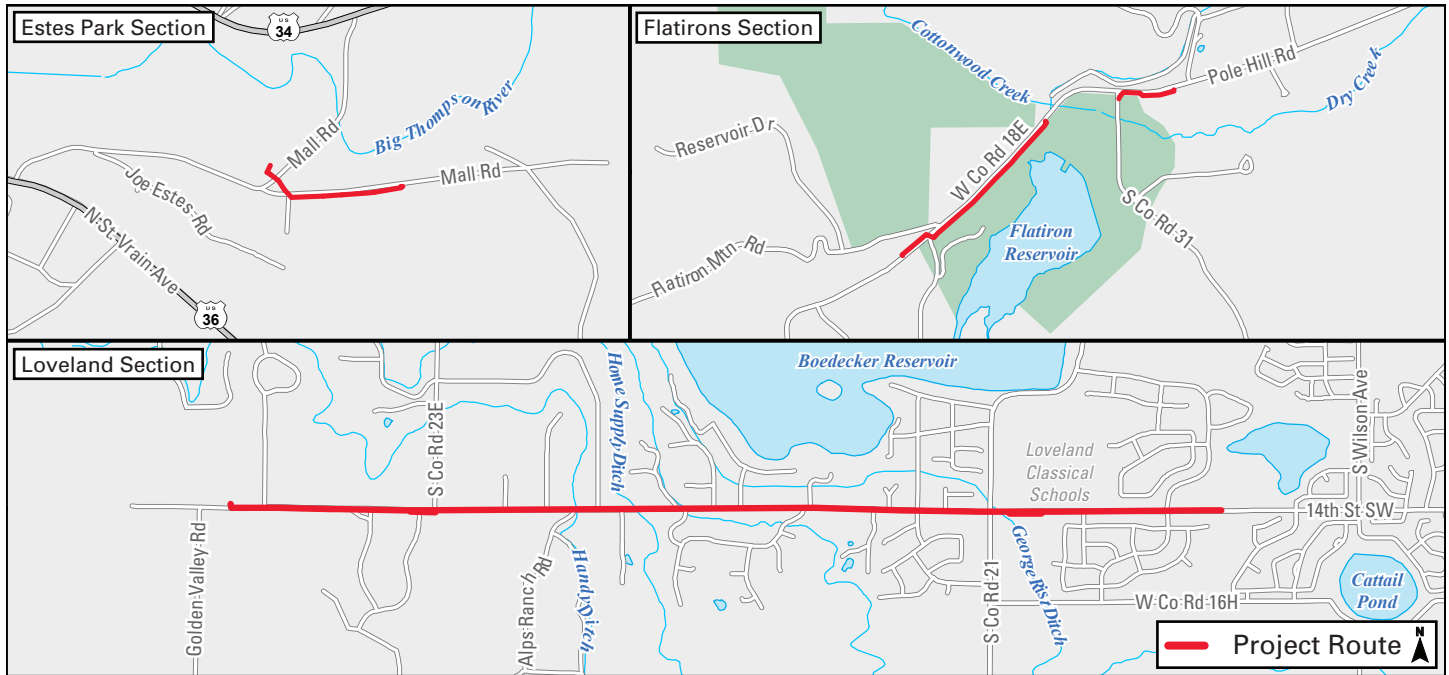


# LOVELAND TO ESTES PARK NATURAL GAS PROJECT



## CONSTRUCTION FLYER

# CONSTRUCTION STARTING SOON



This map is a graphic and may not show exact locations.

### Overview



We are revitalizing a section of our natural gas system that runs from Loveland to Estes Park. We will install natural gas line and rebuild natural gas regulator stations in Loveland, Estes Park and unincorporated Larimer County.

This work allows us to continue to provide safe, reliable service and enhances system resiliency during extreme weather.

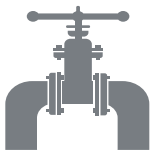
### Schedule



Construction is expected to begin in spring 2022 and continue through the end of 2022.

We will work as efficiently as possible to reduce impacts to your community. Schedules are subject to change.

### Safety



Public safety is at the foundation of all we do. The safety of the public around our natural gas system influences every decision we make.

If you suspect a natural gas leak, leave your home or business immediately. Once you are safely away, call **911**, then Xcel Energy at **800-895-2999**.



## Contact Us

833-320-3306

[Info@XcelEnergyLovelandtoEstesParkProject.com](mailto:Info@XcelEnergyLovelandtoEstesParkProject.com)

[XcelEnergyNaturalGasProjects.com/LovelandtoEstesPark](https://XcelEnergyNaturalGasProjects.com/LovelandtoEstesPark)